



Power Mover™

Industrial Tine Grapple

Power Mover

60" Model - #900682

68" Model - #900684

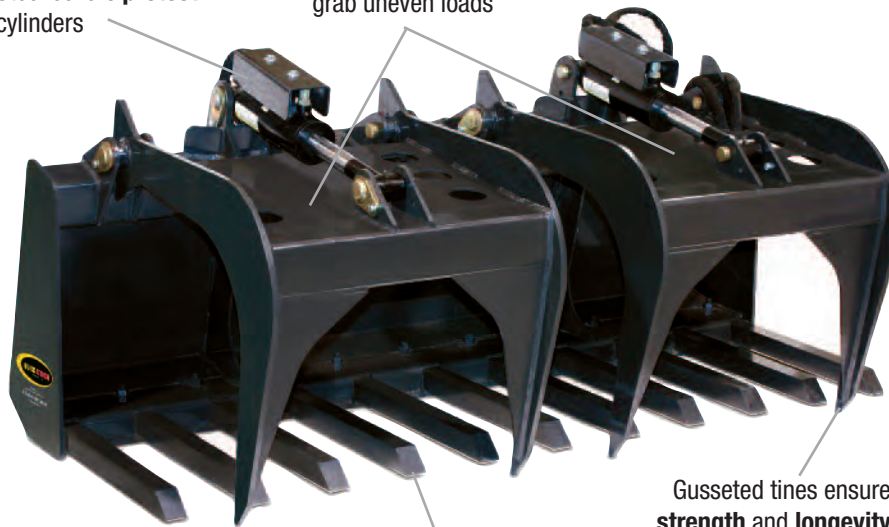
76" Model - #900686

FEATURES

- Our universal quick attach plates fit most skid steers
- Strong tines handle broken concrete, stumps, and municipal waste easily
- Heavy-duty tool moves difficult to handle material quickly and effectively
- The independent dual grapple allows the operator to handle uneven, odd-shaped material
- Perfect for demolition and clean-up work

Steel covers protect cylinders

Independent grapples grab uneven loads



Lower teeth are replaceable

Gusseted tines ensure strength and longevity

Awesome Power and Capability...

This attachment is ideal for moving hard to grip material. The combination of strong tines with the durable grapple allows you to manipulate material with ease.

AVAILABLE OPTIONS

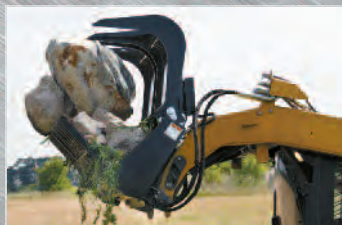
60" Model

68" Model

76" Model

Factory Installed Faster Flat-Faced Couplers

Factory Installed Parker Flat-Faced Couplers



Handles uneven loads.

STANDARD SPECIFICATIONS

Model	60"	68"	76"
Weight	835#	896#	957#
Max. Width	60.75"	68.75"	76.75"
Width Between Teeth Lower	4.75"	4.88"	5.00"
Height with Teeth Closed	26.76"	26.76"	26.76"
Max. Height with Teeth Open	47.71"	47.71"	47.71"
Max. Opening	40.1"	40.1"	40.1"
Grapple Teeth Lower (Qty)	10	11	12
3000# Hyd. Cylinder (Qty)	2	2	2
Steel Construction of Upper Teeth	Hi - strength		
Steel Construction of Lower Teeth	1.75" 1045		

Prices and specifications subject to change without notice.



1-866-428-8224

www.quickattach.com



F.O.B. THE FACTORY